

**OFFICINE
NEGRI** S.R.L.



MECHANICAL PROCESSING
S I N C E 1 9 6 0



THE COMPANY

“Officine Negri Srl” is a Company specialized in mechanical processing for third Parts. Founded in 1960 as “Officina Meccanica Negri di Negri Rino”, has always worked in the field of machining diversifying customers in many sectors. Our business is based mainly on CNC turning and milling of small and medium series according with Customer specifications.

Currently our staff consists of ten persons:

- 1 person for technical/logistics Department
- 1 person for administrative/purchases Department
- 3 persons for turning Department
- 3 persons for milling Department
- 1 person for CAD/CAM
- 1 warehouseman, cutting metals and various processing

In 2003 the Company moved to the new Premises in Garzigliana (Turin) and has a covered surface of 600 mt/q departments, 100 mt/q offices and 200 mt/q covered warehouse.

PRODUCTS RANGE

- First mounting components for hydraulic hammers and in general construction machinery parts
- Automotive components
- First assembling components for agricultural machinery and wood working machine
- Parts for machine tools

CERTIFIED QUALITY SYSTEM

The Quality System is certified since 2000. Currently in compliance with UNI EN 9001:2008 by the Certification Institute Tüv Italy. The metrology room equipped with a three-dimensional measuring machine allows the product certification.

CNC PROGRAMMING

The technical department has two stations CAD-CAM programming of machine tools with the ability to import various formats in use 2D and 3D.

TURNKEY PRODUCTS

The established cooperation with various suppliers in the sectors: heat and surface treatments, CNC grinding, bar turning and rolling threads, carpentry and laser cutting, gear teeth etc. allows us to deliver the finished product including shipping.



LIST OF MAIN MACHINE TOOLS

T U R N I N G

- BIGLIA B1200/M CNC Lathe with motorized turrets - CNC FANUC 18i/TB
Turning max diameter 400 x 1200 - Bar passage 90 - driven tools
- TOPPER TNL 130 AL CNC Lathe - CNC FANUC Oi - TC Manual Guide
Turning max diameter 400 x 1000 - Bar passage 75 - 12 tools in cycle
- TOPPER TNL 100 AL CNC Lathe - CNC FANUC Oi - TC Manual Guide
Turning max diameter 300 x 600 - Bar passage 50 - 12 tools in cycle
Arranged for bar machining
- DE BERNARDI H300 CNC Lathe - CNC FANUC O-T
Turning max diameter 400 x 1000 - 12 tools in cycle
- DE BERNARDI H100 CNC Lathe - CNC FANUC 18i/T
Turning max diameter 300 x 600 - Bar passage 50 - 12 tools in cycle

M I L L I N G

- CNC vertical machining center KONDIA B1050 - CNC HEIDENHAIN TNC426
Processing capacity xyz 1000x500x610 - 22 tools ISO 40 - Table 4° axis continuous
- CNC vertical machining center KONDIA A10 - CNC HEIDENHAIN TNC530
Processing capacity xyz 1000x500x610 - 22 tools ISO 40 -
- CNC vertical machining center PENTAMAC XM1300 - CNC VISEL
Processing capacity xyz 1300x710x710 - 24 tools ISO 40 - Table 4°- 5° axis continuous
- CNC vertical machining center moving column SIGMA MISSION 5 - CNC FANUC
Processing capacity xyz 1250x600x550 - Table 4° axis continuous
- CNC vertical machining center AWEA BM850 - CNC FANUC oi-MD
Processing capacity xyz 850x600x600 - 30 tools ISO 40 - Table 4° axis continuous TSUDAKOMA RNE250 R
- CN CANTILEVER Milling WAGNER FCU- frontal/vertical ISO 50
Processing capacity xyz 1200x700x500 - CN HEIDENHAIN TNC124

C A D - C A M

- ESPRIT 3D

T O O L I N G

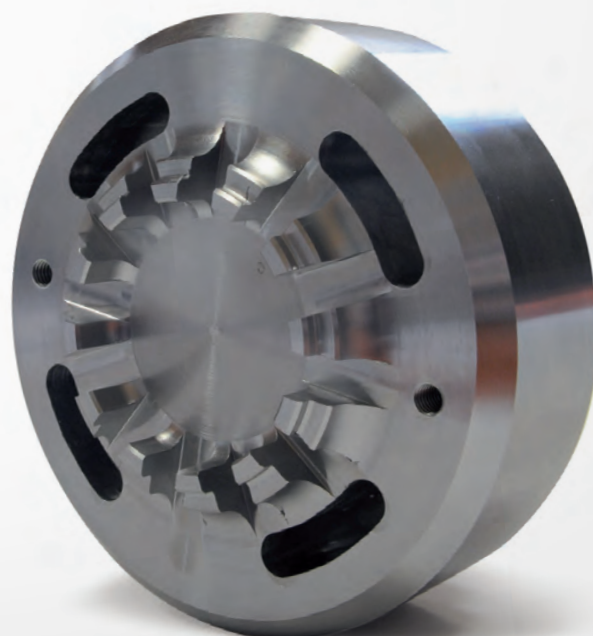
- CMT URSUS 250 displayed Lathe
- IDICE 120 Slotter
- Hobbing horizontal grooved machine
- Column drills of different sizes

Q U A L I T Y C O N T R O L

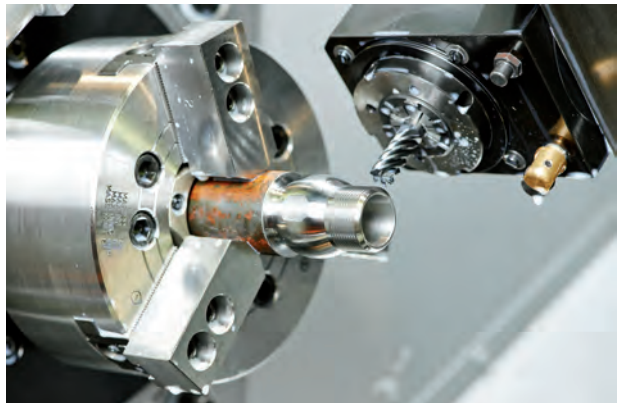
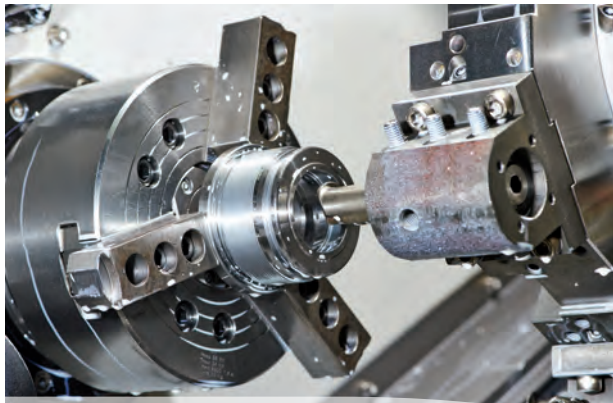
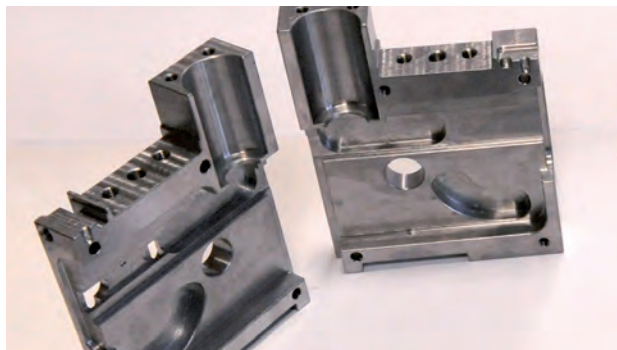
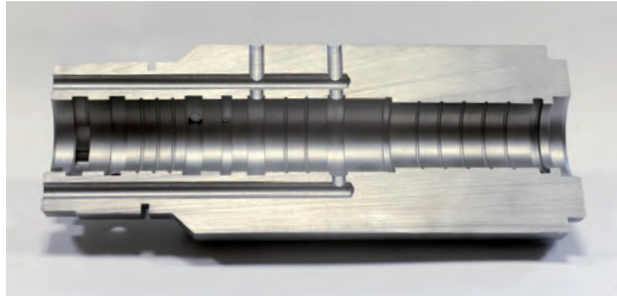
- Standard room with three-dimensional measuring machine DEA mod. SWIFT A01 manual

M E T A L C U T T I N G

- AMBAS SN/AU Automatic sawing machine - max cut 300 mm
- BIANCO B250 Cutting machine manual band



TURNING AND MILLING WORKINGS



How to reach us:

Turin - Pinerolo Motorway, Exit Pinerolo, S.R. N° 589 to Cavour
Area Artigianale Conti (Industrial Site) - Garzigliana

OFFICINE NEGRI S.R.L. UNIPERSONALE

Regione Conti, 15 - 10060 Garzigliana (TO)
Tel. 0121.341165 - Fax 0121.341503
officine.negri@bbradio.it - www.officinenegri.it